

Name \_\_\_\_\_

Date \_\_\_\_\_

# The Alamo - Vocab Cards

## Alamo ]>

a Roman Catholic mission and fortress settled in the 18th century in present-day San Antonio and site of a critical battle during the Texas Revolution in 1836.

Texan defenders fought to protect the \_Alamo\_ during an important battle in the Texas Revolution because it was a strategic fortress.



Use this word in a sentence or give an example to show you understand its meaning:

Draw this vocab word or an example of it:

## David Crockett ]>

an American frontiersman, politician and soldier, also called the "King of the Wild Frontier". He was an expert rifleman and a Tennessee representative in the U.S. House of Representatives. He became a folk hero due his role in the Texas Revolution and the Battle of the Alamo.

The famed folk hero \_David Crockett\_ was an excellent shooter and a hero at the Battle of the Alamo.



Use this word in a sentence or give an example to show you understand its meaning:

Make a connection between this word and another word or idea:

## James Bowie ]>

**an American pioneer and soldier. He became a folk hero due his renowned fighting skills, his role in the Texas Revolution and his leadership at the Battle of the Alamo.**

Because of his reputation as a strong fighter, \_James Bowie\_ was chosen to help command Texan forces at the Battle of the Alamo.



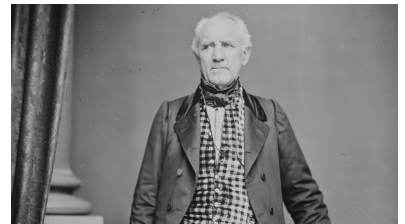
Use this word in a sentence or give an example to show you understand its meaning:

Make a connection between this word and another word or idea:

## Samuel Houston ]>

**an American politician and soldier who served as the first and third president of the Republic of Texas.**

The American politician \_Sam Houston\_ led Texans to victory in their revolution against Mexico and was later elected the first president of the Lone Star Republic.



Use this word in a sentence or give an example to show you understand its meaning:

Make a connection between this word and another word or idea:

## Antonio López de Santa Anna ]>

a Mexican politician and general who fought for Mexican independence from Spain and later against the Texans in the Texas Revolution. He was elected president of Mexico in 1833, but his regime soon became a centralist dictatorship.

\_Santa Anna\_, who was originally elected president, soon became a dictator of Mexico.



Use this word in a sentence or give an example to show you understand its meaning:

Make a connection between this word and another word or idea:

## siege ]>

a long fight, especially the surrounding of a city.

When the opposing army launched a \_siege\_ of the city, some people died from lack of resources.

Synonyms: blockade



Use this word in a sentence or give an example to show you understand its meaning:

Draw this vocab word or an example of it:

## Stephen Austin ]>

an American empresario, known as the "Father of Texas." He led the colonization of Texas by Americans in the 1820s, campaigned for Texan independence in the 1830s.

\_Stephen Austin\_, known today as the "Father of Texas," was the first secretary of state of the Republic of Texas.



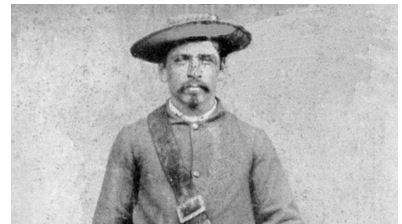
Use this word in a sentence or give an example to show you understand its meaning:

Make a connection between this word and another word or idea:

## Tejanos ]>

people from the state of Texas who are culturally descended from the original Spanish-speaking settlers of Texas and Mexico.

In the 1820s, Texas was known as Tejas, a part of Mexico, and its settlers included \_Tejanos\_, who were of Mexican descent.



Use this word in a sentence or give an example to show you understand its meaning:

Make a connection between this word and another word or idea:

## Texians ]>

### **Anglo-American settlers living in Mexican Tejas, later the Republic of Texas**

Many \_Texians\_, American settlers living in Texas, fought for the Texan cause at the Alamo.



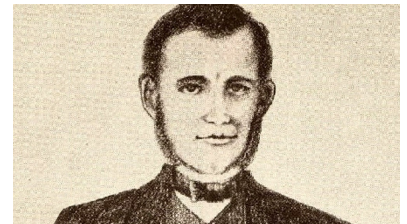
Use this word in a sentence or give an example to show you understand its meaning:

Make a connection between this word and another word or idea:

## William B. Travis ]>

**an American lawyer and soldier who served as lieutenant colonel in the Texas Army during the Texas Revolution. He commanded Texan forces at the Battle of the Alamo.**

In the commander's effort to win the Battle of the Alamo, \_William B. Travis\_ wrote a famous letter asking for help in its defense.



Use this word in a sentence or give an example to show you understand its meaning:

Make a connection between this word and another word or idea: