

Name \_\_\_\_\_

Date \_\_\_\_\_

# Colonial America - Vocab Cards

**colony ]>**

**a territory that is governed by another country.**

In 1776, the people living in each American \_colony\_ declared their independence from England's control.



Use this word in a sentence or give an example to show you understand its meaning:

Draw this vocab word or an example of it:

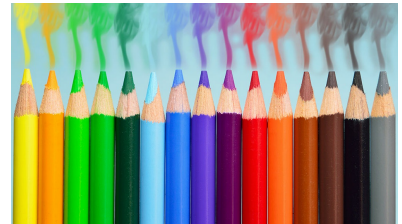
**diverse ]>**

**made up of a variety of different people or things.**

Andre has \_diverse\_ interests. He spends his time cooking, running, painting, and fixing electronics.

Synonyms: varied, differing

Antonyms: similar, conforming, uniform



Use this word in a sentence or give an example to show you understand its meaning:

Draw this vocab word or an example of it:

**economy ]>**

**an organized money system.**

When you spend money at the store, you're contributing to your town's \_economy\_.



Use this word in a sentence or give an example to show you understand its meaning:

Draw this vocab word or an example of it:

**fertile ]>**

**supporting or able to support abundant plant growth.**

The soil in my yard is not very \_fertile\_; I've never been able to grow flowers or vegetables here.



Use this word in a sentence or give an example to show you understand its meaning:

Draw this vocab word or an example of it:

**goods ]>**

**things that are made or grown and then sold.**

The market had all kinds of \_goods\_ for sale, including fruit, toys and furniture.

Synonyms: merchandise, wares



Use this word in a sentence or give an example to show you understand its meaning:

Draw this vocab word or an example of it:

**Indigenous ]>**

**native to a certain place.**

The Navajo, an \_Indigenous\_ tribe, lived in the Southwest for centuries before the creation of the United States.

Synonyms: native, domestic

Antonyms: nonnative



Use this word in a sentence or give an example to show you understand its meaning:

Make a connection between this word and another word or idea:

**plantation ]>**

**a large estate on which cash crops like cotton, tobacco or sugar are grown, usually by workers who live on the property.**

He grew up on a large \_plantation\_ where cotton was grown.



Use this word in a sentence or give an example to show you understand its meaning:

Draw this vocab word or an example of it:

**region ]>**

**an area of land distinguished by certain features, such as climate or religion.**

Monsoon Asia is a \_region\_ where all the countries have the same type of weather.

Synonyms: area, zone



Use this word in a sentence or give an example to show you understand its meaning:

Draw this vocab word or an example of it:

**slavery ]>**

**the state, condition or practice of owning or being owned by another person.**

The practice of \_slavery\_ was abolished in the United States, and it is now illegal to own another human being.

Synonyms: enslavement



Use this word in a sentence or give an example to show you understand its meaning:

Make a connection between this word and another word or idea:

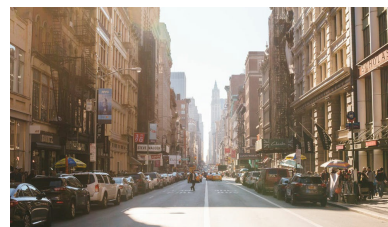
**urban ]>**

**having to do with the city; city-like.**

New York is one of the biggest cities in the world and a great place to study \_urban\_ life.

Synonyms: city-like, metropolitan

Antonyms: rural, rustic



Use this word in a sentence or give an example to show you understand its meaning:

Draw this vocab word or an example of it: