

Name _____

Date _____

The Holocaust - Vocab Cards

Adolf Hitler]>

the leader of the Nazi party and dictator of Nazi Germany from 1933 to 1945.

From 1933 to 1945, Austrian-born _Adolf Hitler_ was the head of Nazi Germany.



Use this word in a sentence or give an example to show you understand its meaning:

Make a connection between this word and another word or idea:

antisemitism]>

discrimination against Jewish people.

Hitler spread his message of _antisemitism_ through hateful speeches, posters, and even children's books.



Use this word in a sentence or give an example to show you understand its meaning:

Make a connection between this word and another word or idea:

Aryan]>

used in Nazism to designate a supposed master race of non-Jewish Whites, usually having Nordic features.

Nazis falsely believed that the _Aryan_ race was superior to all others.



Use this word in a sentence or give an example to show you understand its meaning:

Make a connection between this word and another word or idea:

concentration camp]>

during a war, especially World War II, a type of prison in which a large number of persecuted people are forced to live in very bad conditions. Sometimes they are forced to work and are killed.

After becoming chancellor of Germany, Hitler set up _concentration camps_ to imprison people who were considered "racially undesirable."



Use this word in a sentence or give an example to show you understand its meaning:

Make a connection between this word and another word or idea:

genocide]>

the deliberate killing of an entire racial, political, ethnic, or cultural group.

During the Rwandan _genocide_, hundreds of thousands of Tutsi were murdered by members of the Hutu ethnic majority.



Use this word in a sentence or give an example to show you understand its meaning:

Make a connection between this word and another word or idea:

ghetto]>

a quarter of a city where members of a minority group are forced to live.

In Poland, during World War II, the Nazis forced the Jewish people to live in _ghettos_ .



Use this word in a sentence or give an example to show you understand its meaning:

Make a connection between this word and another word or idea:

Holocaust]>

the mass murder of Jews and members of other groups under the German Nazi regime during World War II.

The _Holocaust_ is a very dark period in history. It is important to study and learn from the horrible crimes that took place during World War II.

Holocaust

Use this word in a sentence or give an example to show you understand its meaning:

Make a connection between this word and another word or idea:

Nazi]>

a member of the National Socialist German Workers' party, which controlled Germany from 1933 to 1945 under Adolf Hitler.

During World War II, members of the _Nazi_ Party pursued racial purity and targeted European Jews.



Use this word in a sentence or give an example to show you understand its meaning:

Make a connection between this word and another word or idea:

persecution]>

consistent bad treatment of people in a specific racial, ethnic, or cultural group; the condition of being treated this way.

After years of religious _persecution_, many fled in search of a safer place where they might be free.

Synonyms: maltreatment, oppression



Use this word in a sentence or give an example to show you understand its meaning:

Make a connection between this word and another word or idea:

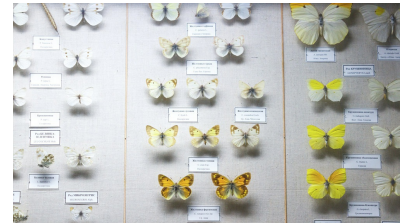
systematic]>

done methodically, according to a procedure or plan.

Casey cleaned her house _systematically_, always starting with the kitchen and then working through the living room and bedroom in exactly that order.

Synonyms: planned, methodical, organized

Antonyms: random, disordered



Use this word in a sentence or give an example to show you understand its meaning:

Draw this vocab word or an example of it: